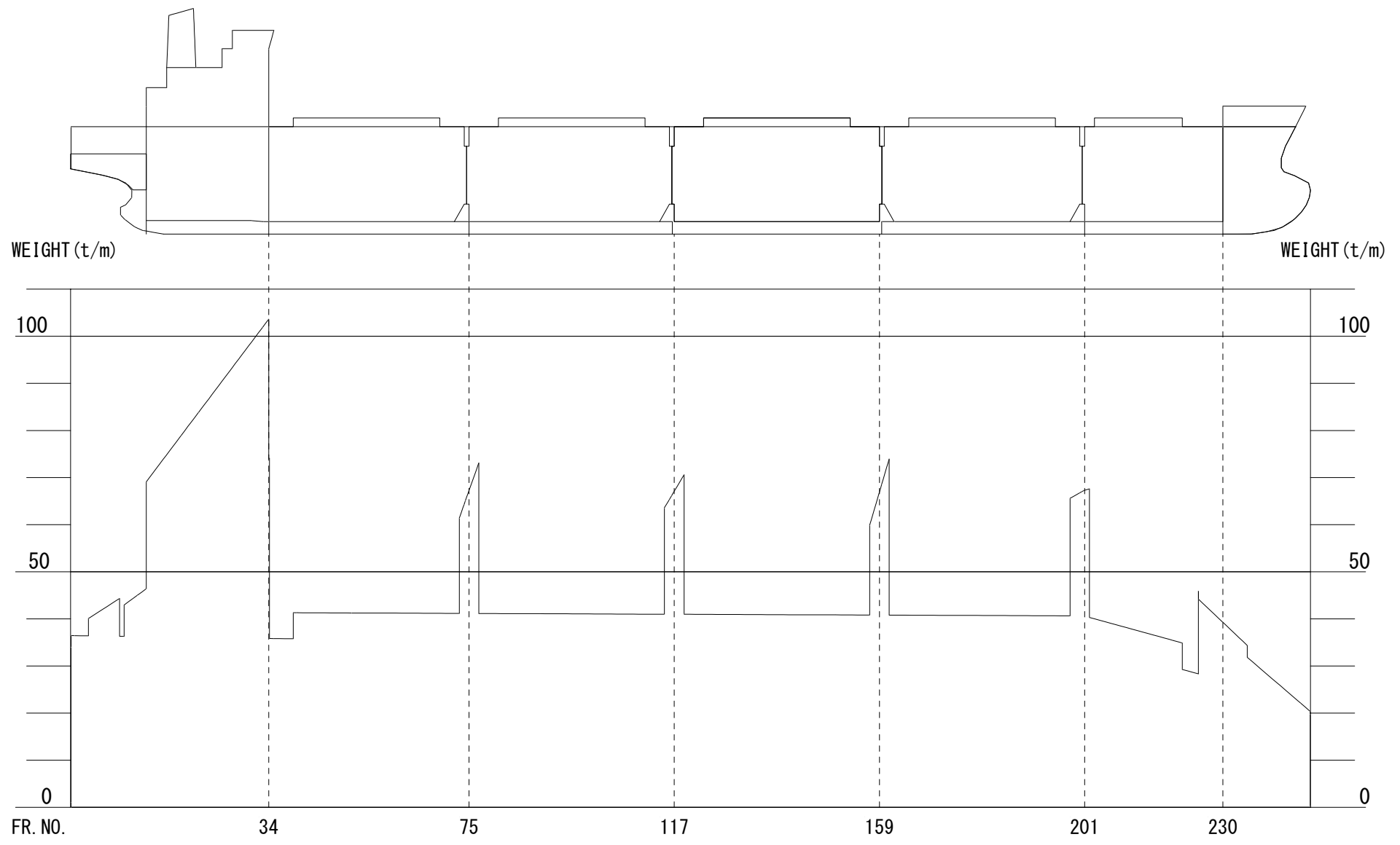


# LIGHT WEIGHT DISTRIBUTION



## LIGHT WEIGHT AND DISTRIBUTION

I T E M S	WEIGHT (T)	MID. G (M)	LEFT		RIGHT	
			FROM MID-SHIP (M)	WEIGHT (T/M)	FROM MID-SHIP (M)	WEIGHT (T/M)
(A) BASIC WEIGHT						
BASIC WEIGHT 1	1015.75	68.710	84.189	32.97	53.152	32.48
BASIC WEIGHT 2	3503.78	-0.785	53.152	32.48	-54.723	32.48
BASIC WEIGHT 3	805.77	-68.943	-54.723	32.48	-85.761	19.44
SUB-TOTAL	5325.30	2.158				
(B) LOCAL WEIGHT						
FCLE DECK	110.00	-75.610	-70.420	14.13	-85.830	0.15
ACCOMM. DECK HOUSE	270.00	64.900	76.920	4.99	57.070	22.22
HATCH COV. /HOLD VENT	681.00	-7.400	53.720	5.54	-68.220	5.63
NO. 1 DECK CRANE POST	70.00	-54.170	-52.810	24.95	-55.490	27.29
NO. 2 DECK CRANE POST	70.00	-26.800	-25.340	19.10	-28.020	33.14
NO. 3 DECK CRANE POST	70.00	1.400	2.800	22.61	0.120	29.63
NO. 4 DECK CRANE POST	70.00	29.500	30.940	20.27	28.260	31.97
ACCOMM. FITT. WEIGHT	90.00	64.900	76.920	1.66	57.070	7.41
OTHER F&O WEIGHT	319.00	11.400	84.180	2.43	-70.430	1.70
MACH. WEIGHT	515.00	64.700	73.870	22.68	56.970	38.26
DECK MACHINERY (FORE)	20.00	-73.600	-70.420	3.44	-77.120	2.53
DECK MACHINERY (AFT)	25.00	79.400	81.800	3.67	77.530	8.03
MISCELLANEOUS	150.00	5.000	84.190	1.06	-85.760	0.70
SUB-TOTAL	2460.00	18.180				
(C) LIGHT CONDITION WEIGHT						
TOTAL	7900.30	7.220				